



THE NEW LEAF

Newsletter of Burke Presbyterian Church Members and Friends

September energy

feels like new notebooks and crisp preparation in the air. Fresh calendars and white board markers. Banging the sand off shoes like the ritual farewell dance of summer's end. There's the shock of a yellow leaf where it had all been hot green or a fuller routine that feels normal-ish. Sometimes there's the whiff of aging on the air like chimney smoke. September energy is truly a threshold time, a time of looking back and looking ahead, a time something poets call a "liminal space" where you are able to see where you're going and where you've been at the same time. Theologians call this space "God's already and not yet."

For our congregation, September energy means a vibrant welcome to participation in community. Two services, choirs, Youth Connections, Sunday School, small groups, committees, mission opportunities, and Rainbow. And it also means we bring with us what we have learned in and after Covid's hardest seasons. We give thanks for the enormous effort given to retire the debt on the building expansion. We honor deeply the people, the effort and most importantly, the faith that have gotten us here. We straddle past and future for a moment, as Christ taught us, and then we step into the new. *(continued on page 2)*



Starting September 10, 2023

SUNDAY WORSHIP

9:00am in person
11:15am in person & online

SUNDAY SCHOOL

10:15 - 11:00am

To join us for online worship

at 11:15am on Sundays:
Visit www.BurkePresChurch.org, choose "Plan a Visit" (green button within the big photo), then select either the Zoom button or the YouTube button.

Sunday, September 3

- ❖ One worship service at 10:00am at BPC
 - ❖ Church picnic 11:30am-2:00pm at Burke Lake Park, Shelter C
- Hope you can join us!





A Note from our Pastor (continued from page 1)

For our September sermon series, we will be considering "Things Jesus Never Said," interrogating some of the cultural sayings that have often been misattributed to Jesus, such as "follow your heart" and "God never gives people more than they can handle." It is my hope that this will bang off some of the cultural litter that we may not even realize is affecting our faith.

It is time to step through this threshold. I invite you to consider the ways God is inviting you to do something or be someone new.

Blessings, *Becca*

BPC Staff

Senior Pastor and Head of Staff

Rev. Becca Messman
(office@burkepreschurch.org)

Associate Pastor for Youth Ministry

Rev. Adam Ogg
(youth@burkepreschurch.org)

Parish Associate

Rev. Catherine Taylor
(office@burkepreschurch.org)

Director of Spiritual Growth

Arlene Decina
(children@burkepreschurch.org)

Director of Music Ministries

Julianne Erbrecht
(music@burkepreschurch.org)

Director of Communications

Elizabeth Reece
(office@burkepreschurch.org)

Preschool Director

Anndra Rowland
preschool@burkepreschuchr.org

Office Manager

Nicole Sheely
(office@burkepreschurch.org)

Business Administrator

Holly Walsh
(office@burkepreschurch.org)

Pianist

Wei-Han Wu
(office@burkepreschurch.org)

BPC Leadership

BPC is governed by a 15-member Session ("elders") charged with the spiritual leadership of the congregation, policy-setting and long-term planning.

The board of deacons provides pastoral care to congregants in need.

Contact Us

5690 Oak Leather Drive
Burke, VA 22015
704-764-0456
office@BurkePresChurch.org
www.BurkePresChurch.org

Sign Up for Information

The New Leaf, a newsletter of BPC members and friends, is published periodically. For regular updates on the life and ministry of Burke Presbyterian Church, refer to our weekly emails and the "In Community" announcements in Sunday worship bulletins. To sign up for our emails, visit our website, contact the church office, or fill out the form in the friendship pads.



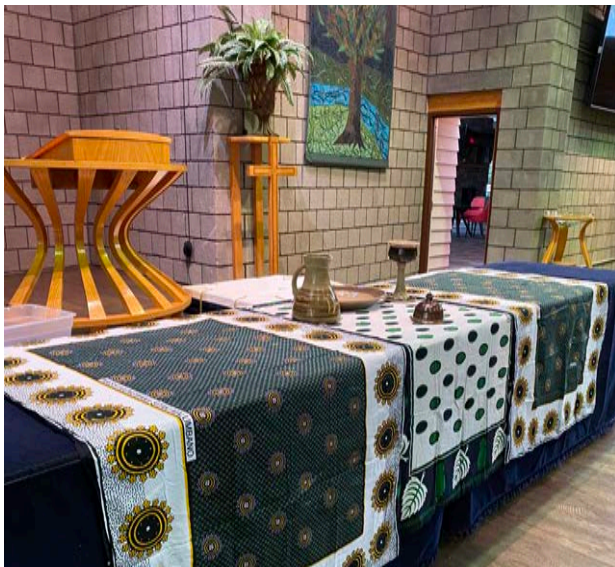
You're invited to explore membership at BPC

If you have been attending BPC for awhile or are brand new here, we hope you are finding your time with us meaningful, inspiring, challenging, and even fun. Searching for and visiting any new church can feel awkward or uncertain; we hope you have met some great people and found places to fit in and get connected.

If you are thinking about joining us or just want to learn more about Presbyterians and our church, you are invited to attend the Fall Exploring Membership class series. Questions are always welcome, and our pastors, ministry staff, and church leaders will answer anything!

Mark your calendar for the first gathering on Sunday, September 24, 2023, at 10:15am, with additional sessions on October 1 and October 8. We expect participants who choose to join the church will do so at the 11:15am service on October 15.

To express your interest and find out more, please get in touch with Elder Anita Pesses.



Did you know?

- ✦ Our Communion Table is being refinished.
- ✦ We have used it lovingly (and well) since it was built in the early 1980s.
- ✦ The table was created by a local woodworker who won a national award for his design. He also designed the cross, the pulpit, the baptismal font, and the original flower stands.
- ✦ The top of the table is an inlay of walnut into red oak.
- ✦ Many thanks to the Fix-It Team and Elder for Worship Sherrie Brady for supporting this project.



Programs for Children and Youth

At BPC, we take seriously our baptismal promises to welcome and nurture our children and youth in the journey of faith. Our youth programs are for 7th through 12 graders; our children’s programs are designed for 6th graders and younger.

On Sunday mornings, BPC welcomes children and youth ...

- ... in the **Nursery** (childcare), for ages 3 and younger during Sunday School and both Sunday morning worship services.
- ... in **Stepping Stones**, for ages 3 (as of the beginning of the current school year) through 5 (not yet in kindergarten). Following the children’s message in worship, children are invited to a separate space for a Bible story and gently structured activities.
- ... in **Godly Play**, for kindergarteners and up, following the children’s message in worship. We gather in a circle for a story and wondering, respond to the story during “work time,” and then conclude with blessings and goodbyes. Godly Play is an interpretation of Montessori Religious education.
- ... in **Sunday School**, for children and youth through 12th grade. We gather each week from 10:15 to 11am to enjoy and engage, to be comforted and challenged by the stories of the Bible and issues of our time and to connect with our community of faith. Class offerings and locations will be posted in the Gathering Space.

Sunday School and other Sunday morning programs for children and youth begin on September 10, 2023.

Register for ALL of our programs for children and youth (one form per family)



Rainbow for K-6th on Wednesday evenings, starting soon

Children in grades K through 6 are invited to Rainbow, a “retreat in the middle of the week.” Each Wednesday from 5:30 to 7:00pm, beginning October 4, we gather for recreation/creative arts, music, and a family-style meal.

During music (children’s choirs), students explore their voices, experience steady beat and rhythm, and learn the basics of singing. The choirs prepare songs to be shared in Sunday morning worship services. Instruments, such as chimes and percussion, are used periodically.



At Rainbow, we put into practice what it is to be the church and to treat one another as children of God. Parents are encouraged to participate in one way or another. We also offer “Raindrops” for younger children of program leaders and assistants.

Programs for Children and Youth

Later on Sundays, youth are warmly invited . . .

. . . to **IMPACT Youth Choir**, for all 7th through 12th graders, no experience needed! IMPACT rehearses on Sundays from 4:00 to 5:15pm and leads in worship on the 2nd and 4th Sundays of each month. In June, the choir will travel by bus to Toronto, Ontario, for their annual tour of music and mission. IMPACT rehearsals begin on September 10. New members and their parents are invited to an orientation at 3:30pm before the first rehearsal on September 10.

. . . to **Youth Connections**, for all 7th through 12th graders. Youth Connections starts with a shared meal, then transitions to a series of activities, such as playing games, having conversations about faith and life in small groups, and building relationships with adults and other youth. Youth Connections happens most Sunday evenings, 5:30-7:30pm, starting with dinner. Highlights this fall include a September day of service with a lock-in, an evening at Cox Farms, and the annual Thanksgiving potluck.



. . . to **Confirmation**, a year-long exploration of the Christian faith, for 8th graders and up. The group will meet monthly on Sundays, starting with dinner at 5:30pm (along with Youth Connections) and wrapping up at 7:30pm. We'll also take field trips to other faith communities and do mission work together.

**Have questions? Need more information?
We'd like to hear from you!**

Children - Arlene Decina (children@BurkePresChurch.org)
 Youth - Pastor Adam Ogg (youth@BurkePresChurch.org)
 Music - Julianne Erbrecht (music@BurkePresChurch.org)

Save the date!

Wednesday, September 27
6:00-7:15pm

**Rainbow
Welcome Dinner**

The whole family is invited!
Watch for an Evite
in your in-box.



Programs for Children and Youth



Join a kitchen team!

Adults are needed to support meals for our children's and youth ministry programs, late afternoons/early evenings on Wednesdays (for Rainbow) and Sundays (for Youth Connections). It's also a great opportunity for fellowship! Please let us know if you are interested by getting in touch with children@BurkePresChurch.org or youth@BurkePresChurch.org.

Bible Sunday is September 17

On Sunday, September 17, we will present Bibles to our 4th graders and and storybook Bibles to our kindergartners.

Parents of 4th graders and kindergartners ~ contact children@BurkePresChurch.org to let us know whether your child will be present in worship on September 17 to receive a gift

Bible. Also, please let us know how you'd like their name printed inside the cover. For example, should we print your child's first and last name? Should we include their middle name? Thank you!



Come one, come all!
youth & adults

**SEPTEMBER
CIRCUS OF SERVICE**

Saturday, September 23

scan code
for info &
to sign up

Adult Sunday School

classes begin September 10

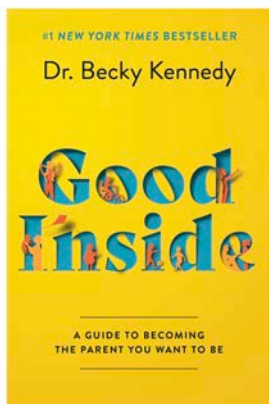
Sunday School classes for all ages begin September 10, 2023, between worship services from 10:15 to 11:00am. Offerings for adults vary by season; our line up for fall 2023 is detailed below. Class locations will be posted in the Gathering Space; check the screens across from the "Remember Your Baptism" fountain when you arrive. If you have any questions or would like more information, contact Director of Spiritual Growth Ministries Arlene Decina (office@BurkePresChurch.org).

"From Jesus to Christ: The First Christians"

Over a period of 8 weeks, this group will view and discuss this PBS Frontline series, which explores the life and death of Jesus, and the men and women whose belief, conviction, and martyrdom created the religion we now know as Christianity.

Throughout the series, twelve scholars – New Testament theologians, archaeologists, and historians – representing a wide range of viewpoints and diversity of faiths present their contributions and understandings of how the Christian faith came to be.

Join facilitators Laurie Roberts, David Roberts, and Jamie Deaton for this lively and thoughtful discussion.



Good Inside book discussion

Connect with other parents and friends who love and care for children as we discuss Dr. Becky Kennedy's book *Good Inside*.

As described on the book jacket, "This book is for any parent who has ever struggled under the substantial weight of caregiving — which is to say, all of us." "*Good Inside* is not only a wise and practical guide to raising resilient, emotionally healthy kids, but it's also a supportive resource for overwhelmed parents who need more compassion and less stress." "Whether you're struggling to get your toddler to calm down or your teenager to open up, Dr. Becky is a fountain of wisdom."

We hope you'll join us!

Sunday Morning Scriptures

Sunday Morning Scriptures continues online on Zoom, moving back to 8:00am on September 10. All are welcome to join this rich half-hour session of reading and discussing the sermon text of the morning. The Zoom link (same each week) is published near the top of Friday's email.



Multi-Generation Godly Play

Godly Play will be offered for all ages on the first Sundays of the month, beginning in October. All are welcome ~ adults, youth, and children. Kids are welcome to come on their own or with parents.



Small Groups for Adults

If you're looking for a way to connect, consider one of our small groups. Many small groups actively support our worship services (such as choirs, the greeters, the flower guild, and tech/sound teams), while some work to maintain and improve our church building and grounds (examples are the Woodchucks and the Fix-It Team). Others meet for Bible Study, fellowship, and/or support.

All of our groups are wide open to new friends. To ask questions and/or get more information, contact Elder for Small Groups Meg Ross or the church office (office@BurkePresChurch.org or 703-764-0456). Or, fill out our online "Let's Get Connected" form and someone will get in touch with you.

We hope you'll find a spot here that makes this church feel like home to you!



Fill out our online form!



Introducing . . . a few of our small groups! All are welcome, any time!

Bible and Bagels is a multi-generational group that meets twice a month on Wednesday mornings for prayer, Bible Study, and fellowship. Contact: Sheila Swenson

Leaves of Grace is BPC's book group, which gathers on Zoom once a month on Sunday afternoons. All are welcome! Contact: Lynn Miller



Bible and Bagels, Christmas Brunch 2022

Men of Burke meets twice a month on Saturday mornings for fellowship and mutual support. Saturday breakfasts usually take place on the first Saturday, with a Zoom check-in two weeks later. Contact: Bob Hemm

Monday Night Women's Bible Study is an intergenerational group that meets monthly in person and online (hybrid) to share prayer concerns, study scripture, and develop and deepen friendships. They use the Presbyterian Women's annual Bible Study. Contact: Jill Moore

"Nightingales" Bible Study is a lively group of ladies that meet monthly during the day. They currently meet via Zoom but are looking to offer a hybrid (both in person and Zoom) option. This year, they are reading a chapter a month in *Hope - A User's Manual*, a book written by former BPC Associate Pastor Rev. MaryAnn McKibben Dana. Contact: Lynne Garvey-Hodge

Tuesday Morning Bible Study picks a book of the Bible and moves at their own pace. They read together, discuss and wonder, and allow space for silence, in person and online (hybrid). Contact: Sherrie Brady

Music

Everyone is invited to participate in a choir or ensemble. All ages and abilities are welcome! No prior experience needed. For more information about any aspect of music at BPC, contact Director of Music Ministries Julianne Erbrecht (music@BurkePresChurch.org).



Rainbow choirs

Children's Choirs

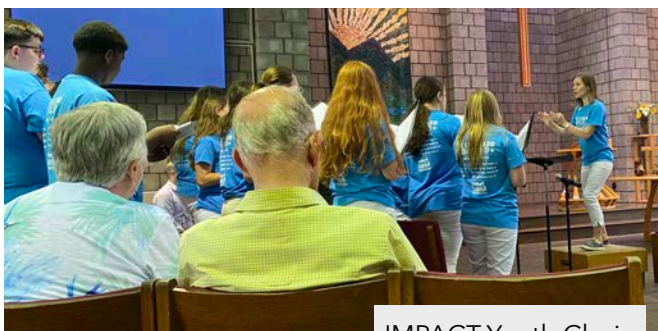
Rainbow Promise (K-2nd grade) and Rainbow Connection (3rd - 6th grades)

Children's choirs are part of Rainbow, BPC's Wednesday evening program for elementary students. They prepare songs to be shared in Sunday morning worship services. See page 4 for more information.

Youth Choir

IMPACT (7th - 12th grades)

IMPACT (Inspiring Music & Praise • Acclaiming Christ Together) sings a wide variety of styles in multiple voice parts. All students are welcome! The choir rehearses on Sundays 4:00-5:15pm and leads in worship twice a month. See page 5 for more information.



IMPACT Youth Choir



Chancel Choir

Adult Choirs

Chancel Choir

Adults of all ages and abilities are invited to sing in the Chancel Choir. New singers (of all voice parts) are welcome; however, the choir would especially like to have a few more tenors! Rehearsals are Wednesdays 7:30-9:00pm, beginning September 6.



Daybreak

Our women's choir sings a variety of styles and is open to all ability and experience levels. The choir leads worship once a month at the 9:00am service. Rehearsals take place on the 2nd & 4th Tuesdays, 9:45-11:00am, beginning September 12.

Instrumentalists

- ❖ The **Handbell Choir** welcomes youth and adult ringers. The bell choir rehearses in the days/weeks prior to the day they are scheduled to play in worship.
- ❖ The **Flute Choir** rehearses periodically. High school age and adult flute players are welcome.
- ❖ We would love to have the BPC **Brass Ensemble** return and play occasionally during the 2023-2024 season. Please get in touch if you play a brass instrument!

Silent Auction to Support our Ministries in Kibwezi

September 25 - October 2, 2023

Bethel Church, Imani elementary school, Polytechnical school, and outlying congregations and pre-schools in Kibwezi, Kenya, are all supported by a long running Burke Presbyterian - Clifton Presbyterian mission project. Our silent auction will provide essential financial support for many aspects of the program, including,

- Meals at school: uji (Kenyan grits), beans, and maize
- Evangelist salaries and transportation to 15 outlying villages
- Preschool building and classroom supplies
- Scholarships for Polytech students

Watch church emails and bulletin announcements for the link/QR code to access the silent auction, which will be all online this year. Browse frequently, bid often!



Donate a service or item to the silent auction

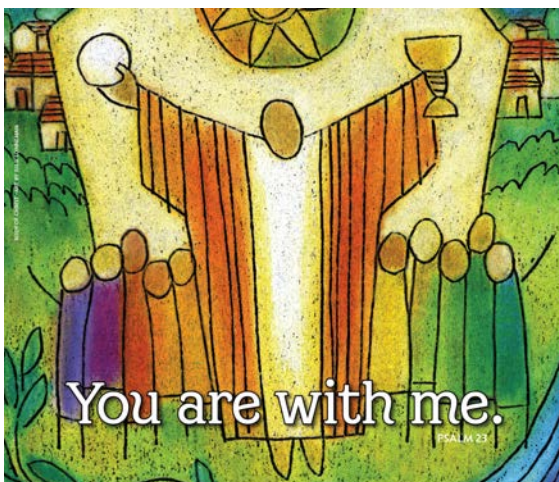
Popular offerings have included baked goods, tickets to theater and sporting events, artwork, yard work, tutoring, help with modern technology, and other opportunities for fun and building relationships. Creativity and new ideas are welcome!

Information on donations is needed no later than September 10, but sooner would be *much* appreciated. Send an email with a description of your donation (as well as a photo) along with your name, address, and points of contact to Kathy Fleming, Jan Smith, and Dave Smith.

SEPTEMBER 3-OCTOBER 1, 2023



PEACE & GLOBAL WITNESS
SPECIAL OFFERINGS
PEACEMAKING AND RECONCILIATION



PCUSA's Peace & Global Witness special offering enables the church to promote the Peace of Christ by addressing systems of conflict and injustice across the world. Your contributions will support the global witness of Christ's peace. You can find more information in the Gathering Space and at www.burkepreschurch.org/peace-and-global-witness-offering

Our neighbors need us. You can give online (scan QR code) or by check made payable to BPC (noting "Peace" or "P&GW" in the memo line). Thank you!



Snacks and Backpacks Tutoring Club

Seeking new tutors for Monday afternoons

The Snacks and Backpacks Tutoring Club serves Bonnie Brae elementary students by providing one-on-one tutoring at BPC on Monday afternoons (3:30-5:00pm), from mid-October through April. The number of students who can participate depends on the number of tutors we have.

This year, we need a few new tutors to continue to support the students already in our program. Please consider joining us, as a regular or substitute tutor, to help with homework and basic skills. Youth and adults are welcome! To learn more about this very rewarding experience, contact Cathey Parker.



Thank you, Read-to-Feed sponsors!

This past spring, the ten elementary children in our Snacks and Backpacks Tutoring Club collected \$1,360 for Heifer International from 28 BPC sponsors. The students read for 112 reading periods (or 37 hours) altogether, and then used their sponsorship money to choose animals for Heifer International to give to needy families in places all over the world. Goats, chicks, and ducks were the most popular choices. Their donation unexpectedly qualified for a ten-fold match, which boosted it to \$13,600! Snacks and Backpacks will work on this project later this school year; stay tuned for how you can participate.

Free Community Shredding Event & Food Collection for ECHO

Saturday, September 30 9:00am-noon BPC Parking Lot Rain or Shine

ECHO's "most needed list"

ECHO (Ecumenical Community Helping Others) serves clients in the Burke/Springfield area.

Most needed food items include

- juice
- cooking oil
- canned corn
- pineapple
- sardines
- bagged rice
- bags of dried beans



This is a great opportunity to clear out your filing cabinets, home offices and basements and help the environment at the same time.

Donations of food will help neighbors who need our support. Your documents will go straight into a secure mobile document destruction vehicle that you can observe.

* Gather your documents in boxes or paper bags (please, no plastic bags)

* No need to remove staples, fasteners, or clips

* Limited to what can fit in a passenger car

Contact for questions: Kathy Fleming

Join us for the Burke/Fairfax CROP Hunger Walk

Sunday, November 5, 2023

2:00 pm start

begins and ends at BPC

BPC will host this year’s local CROP Hunger Walk (our area’s — and BPC’s — 31st walk!) on Sunday, November 5. Teams from other local congregations will join us to walk 3.6 miles, the average distance a woman or young girl in Africa or Asia walks every day to collect water. The water she carries weighs on average 44 pounds, and her journey can take 4 to 5 hours. *We walk because they walk.*

The CROP Hunger Walk is a family-friendly event, fun for all ages! We’ll start at BPC, walk to Knollwood Community Church, pause for a water break, and walk back to BPC for a community celebration. There’s also a shorter “Golden Mile” option.

Walkers and their generous sponsors raise money to end hunger and poverty in the United States and around the world. In November 2022, over 280 walkers participated in our local walk, raising over \$32,000. 25% of the funds raised stay here in Northern Virginia, supporting local hunger-fighting programs like ECHO.

In addition, all are invited to bring a nonperishable food item for ECHO to the walk on November 5.

Have questions? Need more information? Visit www.burkecropwalk.org or get in touch with Amy Stidham.



HOW YOU CAN HELP

- ✦ Sign up to walk (after a worship service starting October 1 or www.burkecropwalk.org)
- ✦ Support a walker with a donation
- ✦ Be a Spirit Walker and raise funds though unable to walk
- ✦ Recruit a team from your neighborhood or workplace
- ✦ Pray for the CROP Hunger Walk and for victims of disasters, poverty, and displacement by war
- ✦ Eat out at one of our "dine for dollars" fundraisers (see below)

2023 CROP Hunger Walk "Dine for Dollars" Fundraisers

Find more info on event flyers, available in the Gathering Space and posted on www.BurkePresChurch.org.

Where	When	How
Glory Days Grill 9526 Old Keene Mill Rd	August 27 - September 9	Turn in copy of itemized receipt (showing amount of food/beverage purchased) to BPC
Chipotle 5747 Burke Centre Pkwy	September 23 4:00-8:00pm	Order online with code BGBRPT3 or show flyer in restaurant
Asian Grill 6228 Rolling Rd	October 4 and 5 noon-9:00pm	Mention CROP Walk or show flyer when you place your order (for to-go orders, when you pick it up)
Panera 6230 W Rolling Rd	October 14 4:00-8:00pm	Order online (or use app) with code FUND4U or show flyer in restaurant
Ledo Pizza 8324 Old Keene Mill Rd	October 25 5:00-9:00pm	Order online with code "Fundraiser" or show flyer in restaurant

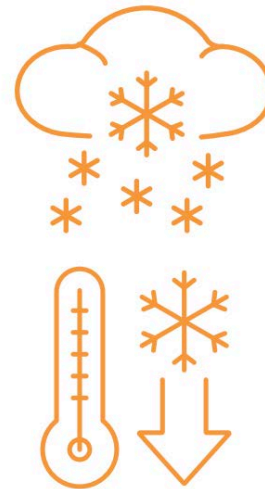
Hypothermia Prevention Program at BPC

February 18 through 25, 2024

Since 2005, Fairfax County’s Hypothermia Prevention Program has prevented death and series injuries among our area’s most vulnerable residents by ensuring that no one must sleep outside during the winter months. This program, which is available to any adult in need of immediate shelter, provides a warm place to stay, food, and other supportive services to help guests.

In mid-February 2024, BPC will serve as one of the rotating faith community sites in the Fairfax Hypothermia Prevention Program operated by FACETS. We will provided shelter and meals for some of our homeless neighbors.

Please consider how you might help! For more information, contact Mara Ashby or Marcy Stennes.



Community Table

Help host our neighbors for a free meal & conversation on 2nd Tuesdays

Community Table has been operating for 12 months straight!

This ministry has been a gift of food and fellowship for neighbors new and old. Community Table has opened our kitchen and our doors to meeting new people and getting to know members on a deeper level. Plus, the meals have been delicious!

You are invited to join us on the second Tuesday of each month, whether you like to prep veggies in the kitchen, sit at a table and talk with guests, or wash dishes. We often need Spanish speakers willing to act as translators, people who can bake a dessert ahead of time at home, and gardeners willing to donate home-grown vegetables for guests to take home, or flowers for the tables.

Children of volunteers and guest are welcome! Watch for our monthly SignUpGenius in church emails and Sunday bulletins for more information and to sign up.



More Ways to Volunteer

Sunday Morning Coffee Crew

Thanks to Sheila Steel and her coffee crew, we are all well caffeinated! Or at least enjoy a breakfast beverage. They give their time and energy and we are regularly glad to see their work at the coffee bar. Want to help? Send an email to Sheila.

Support Sunday Worship Services

There are lots of ways to support our Sunday morning worship services. Volunteers are needed in a variety of roles, including ushers and sound system operators. Contact: Sherrie Brady



Here's a "birds eye" view of the Meeting House A/V upgrade project which is moving to the training phase for our volunteer Zoom/YouTube operators. Stay tuned!

BPC Fun Team

Enjoy planning events? Like to coordinate potlucks? Have tons of fun ideas for gathering people? Join the fun team! We would love to have you and your energy. Contact: Amanda Deaton

Childcare Help Needed!

We are in particular in need of adult childcare staff, paid or volunteer. Flexible, rotating scheduling. Youth volunteers (7th-9th grade) and staff (10th grade and older) are also welcome. Contact: Arlene Decina (children@BurkePresChurch.org)



Fill out our online form

Fix-It Team, Woodchucks, Polar Bears

We can use a few more hands to take care of our physical space, indoors and out. The Fix-It Team takes care of odd jobs around the building, the Woodchucks keep our BPC grounds and parking lots tidy (and roof leaks at a minimum), and the Polar Bears spread salt and clear sidewalks of snow and ice. If you can join us, contact Jocelyn Callister or BJ Postlewaite.





**Fighting Hunger
for 31 Years!**
Join us for this
year's walk!

Burke/Fairfax CROP Hunger Walk

*A Community Walk to Raise
Awareness and Funds to Help Fight Local and Global Hunger*
Sunday, November 5th (2 pm)

Where: The walk starts and ends at
Burke Presbyterian Church
5690 Oak Leather Drive, Burke

Who: Adults, Youth, Children

Details: burkecropwalk.org



CROP Walkers change
lives, you can too!

- *Worldwide, more than 800 million people regularly go to bed hungry*
- *More than 40 million Americans struggle to put food on the table, and more than 1 in 6 American children live with hunger*



5690 Oak Leather Drive
Burke, VA 22015
703-764-0456
www.BurkePresChurch.org