



Summer 2024

The New Leaf

Pastor's Note

"The quality of life is in proportion, always, to the capacity for delight. The capacity for delight is the gift of paying attention."

- Julia Cameron, *The Artist's Way*

A church newsletter is a different kind of news source. Most of it is not newsy. We know, in general, about the amazing choir tour about to happen and we know, in general, about a Spring that was filled with worship services, small group meetings, and love of our neighbor. This church newsletter is, at its best, our effort to pay attention to what God has been doing in and around us as a church in very specific ways, and in that discovery, experience delight and life in abundance, as John 10:10 says.



The delight is in the details. Can we look with delight at the hot pink hydrangea near the entrance to the meditation room? Can we wonder who cleared the weeds away from its green stalk so that it could blaze out of the green surroundings like it does? Can we then wonder what needs to be cleared away to bring our souls to a season of blossoming? And what about the child who created a chalk masterpiece on the sidewalk at the Rainbow celebration, squatting down on young knees to draw something that a Spring rain would

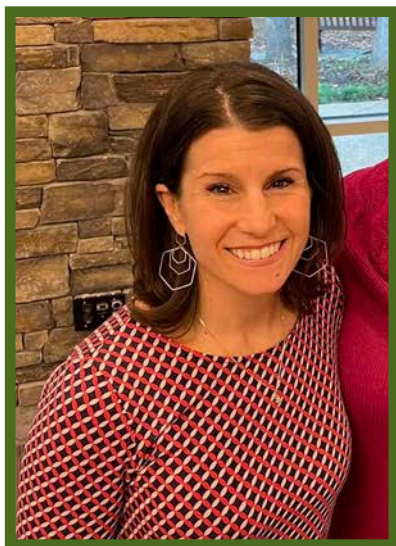
wash away in a few hours? Can we then wonder about the chalk drawing of our own lives and think for a second that it is entirely possible and even preferable to love our knees as they are now and our piece of chalk as nubby as it might be, knowing that we are artwork in God's eyes?

This church is fortunate to have so many colorful humans here, scribbling out lives that we pray look like Jesus. As you flip through these pages, notice what tiny detail delights you. Maybe you could whisper a prayer for that ministry or person to flourish, and then pray the same for yourself and this world.

The heavens are telling the glory of God; and the firmament proclaims God's handiwork.

Psalms 19:1

Becca



Mission

VOICE Listening Session

On June 23 at 7 pm, BPC will convene a Listening Session in support of our work with Virginians Organized for Interfaith Community Engagement (VOICE) with the overarching community goal of increasing access to Behavioral Health resources (mental health and substance use prevention) both in Fairfax County and across the Commonwealth. We are asking BPC adults and teens to attend this

listening session to share your perspective on challenges and barriers to Behavioral Health resources that our community faces. The information we gather on June 23 will be brought together with findings from listening sessions from across Fairfax County at a meeting to be held Sunday July 14 at BPC. The common themes we identify will help us work with VOICE and INOVA Behavioral Health as we prepare for a countywide meeting on Behavioral Health resource gaps to be held on Sunday afternoon, Sept 29, from 3:15-5 pm at Hayfield Secondary school.



Here are some questions that VOICE has provided that will be guiding us as our BPC team develops the format for our Listening Session.

1. What are the biggest challenges facing our community regarding mental health?
2. How do you think mental health issues are perceived in our community? Are there stigmas or misconceptions you've noticed?
3. If you had the resources, what changes would you implement in our community to better support individuals and families affected by mental health issues?
4. Are there particular groups or individuals in our community who you feel are underserved in terms of mental health support? Why do you think that is?

The BPC team includes Rev. Becca Messman, Rev. Catherine Taylor, Interim Youth Director Kyle Putnam, Rev. Dr. Lynn Stanton-Hoyle, and Elder for Mission Ministry Dr. Susan E. Lydick. If you are unable to attend the Listening Session on June 29 and would like to share your perspective, please contact a member of our team in advance of that meeting.

Mission

Tumaini Orphan Care

Thanks to your generous donations to the Tumaini Orphan Care Program in Kibwezi, Kenya. We have been able to raise \$24,700!

With your donations, we are able to fund the TOCP for another year. That means there are 35 children in Kibwezi, Kenya who will have school fees, school supplies, uniforms, safe housing, counseling and food stipends. In addition, family caregivers will be provided with goats and chickens that will generate income and adequately feed many.

Your dedication to this mission since 2004

illustrates BPC's commitment to our vision of spreading love, hope, and compassion. Indeed, our faith does not exist in a vacuum and has extended to a faraway community that we serve and are served by. Being in Christian relationship with this community almost 7,000 miles away makes the world a smaller place.

I encourage you to get involved with our Kibwezi Mission and the TOCP. It will change your life. This is a mission that has been able to intercede in places of despair and transform lives in Burke, Virginia, as well as Kibwezi, Kenya.

Thank you for your generosity!

For more information about our Kibwezi mission, you can contact David Smith (dbsmith61@gmail.com) or Susan Kipp (skipp54@cox.net).



Commissioning of Kibwezi Mission Team

On June 23 the Kibwezi Mission Team will be commissioned in worship service. Eighteen participants will be traveling to Kenya on June 25. Join us to pray for them.



Community Meals

After the successful efforts for the Hypothermia Shelter last winter, we are continuing our outreach by supporting FACETS hot meals program. FACETS is a local organization that supports people in vulnerable situations. Starting Wednesday, June 5th, our community meals team will be preparing 150 meals for the FACETS van to transport to people in need. We will continue this on the first Wednesday of every month.

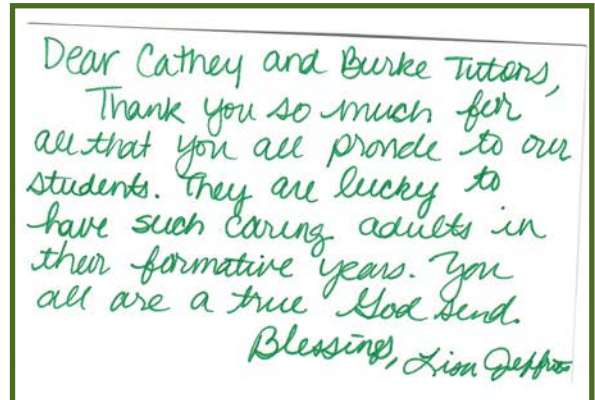


BPC Ministry

Snacks and Backpacks

Our Monday Tutoring program for a few Bonnie Brae Elementary students wrapped up this year at the end of April. It was BPC's 26th year providing this program as a community service. A good deal of extracurricular learning happened in our low-pressure "Tutoring Club." The students like to share their homework and school success with us and the tutors encourage this.

A wonderful achievement was the Read-to-Feed project that benefitted Heifer International, in which our children read with their tutors for at least 20 minutes each Monday. They raised almost \$900 this year supported by generous sponsors from BPC that was used to buy animals for families in need! The sponsors went the extra mile and donated another \$700 to this cause. Most students put some or even all of their "earnings" toward buying chickens for families across the globe. The tutors and students voted to send extra money to support a family wanting to send a daughter to school. Read-to-Feed is a win-win project!



Labyrinth Ministry

A labyrinth walk is an ancient method of practicing meditation, calming and prayer while slowly walking along the path. You are invited to walk the outdoor labyrinth at your leisure. The labyrinth is located in the Memorial Garden near the upper parking lot entrance. It is marked by rocks and shaped into a gentle, walkable path. If you prefer to walk indoors, a canvas labyrinth is placed on the floor inside the Meeting House the first Monday of most months from 1 to 7:30 pm.



Communion Servers

The Lord's Supper is one of the two sacraments recognized by the Presbyterian Church (USA). Customarily at BPC communion is observed on the first Sunday of every month and at other special services such as Christmas Eve, Ash Wednesday, and Maundy Thursday. Serving and being served is a holy act that reminds us of God's acts of salvation in Jesus Christ, connecting us to each other and to the communion of saints.

Recently the session voted to invite all members (adult and youth) to participate in serving the elements. BJ Sadtler, as communion coordinator, schedules members each month. If you would like to be included in this ministry please email or call her. If you have not served before or it has been some time since you have served, she will meet with you beforehand to orient you to the process. BJ Sadtler (bjsadtler@cox.net).

Music Ministry

Summer Music



Musicians of all ages and abilities are invited to provide an Anthem or Offertory (or both) for a service this summer. For more information and to sign-up, use the QR code.

Questions? Contact Julianne Erbrecht,
Julianne@BurkePresChurch.org



IMPACT will travel to Canada to share their singing with different church communities in June! IMPACT is our youth choir for grades 7-12.

Join us on Thursday, June 20 at 7 pm, as they return from their trip and host a home concert at BPC!



Summer Choir

The Summer Choir will lead in worship on Sunday morning (one service at 10 a.m.) at six services in June, July, and August. We will gather in the choir room at 9:15 a.m. to prepare the music for the service. In this more relaxed time of year, there will not be a mid-week rehearsal. This is a great opportunity to come check out the choir, share your love of music, or do something a bit out of the ordinary. No experience or preparation needed. Feel free to come as your Sunday schedule allows.

Dates for Summer Choir:

June 23

July 14

July 28

August 4

August 18

August 25

Facilities

Fix-It Team and Woodchucks

While some activities wind down in the summer, work around the grounds and facility is busy and ongoing.

We just had our Spring Gardening Day on May 11 and recently had Mauro's Tree Service remove 25 trees from the grounds that were dying or diseased.

Major Maintenance work over the next few months will cover:

- replacing damaged sections of the cemetery fence
- replacing fan coil units in the music room, Associate Pastor's office, LL 1, 4, and 5
- resealing and painting the parking lots
- replacing the flooring in the music room, Julianne's office, and the workroom to match the flooring in the halls
- repairing the leaks and cover the roof of the North wing as well as add protective coating to the East wing roof (already complete)

The Fix-It Team is busy working on things big and small. This team meets on Tuesday mornings and is happy to have more helpers! Email BJ Postlewaite (bj.postlewaite@gmail.com) for more information.

The Woodchucks help keep our grounds looking great! This time of year, they mow the grass, trim up our greens, and keep the parking lots clean. In the Fall, they do the Herculean work of clearing away all of the fall leaves.

They are also happy to welcome new helpers! They meet on Saturday mornings. For more information, reach out to John Warren (jwarren_16@hotmail.com)

Other upcoming projects for our team include:

- changing out a few drinking fountains for water-bottle fillers
- installing new doors on classrooms E4 & E5
- expanding our facilities rental options

Our next "FixUp Day" will be on June 22 between 9 am & 2 pm - all hands and skills welcome!

Ideas, interest or questions? Reach out to Facilities Elder Jocelyn Callister (jocelyncallister@gmail.com).



Youth and Children

Burke Lake Park Nights

Rising 7th through graduated seniors

New this Summer! We are introducing summer nights at Burke Lake Park! **Beginning June 7 from 7-8pm**, all rising 7th through graduated seniors are invited to come to

Burke Lake Park to just hang out and play games! This is a casual get together for whoever can make it. We will meet by the volleyball courts. Park in the lot between pavilions A and B. If you pass the nets, then you have gone too far. Bring a friend! We will be meeting on these dates:

June 7, 7-8pm

June 21, 7-8pm

July 19, 7-8pm

August 2, 7-8pm

August 16, 7-8pm



Frozen tee Youth Connections

VBS

July 15, 16, 17 from 2-5 pm. Vacation Bible School is for rising Kindergarten through rising 7th grade. If you have an older youth, they are welcome to assist. Childcare is provided for program leaders. There's no charge for the program, but we do need you to register. Please scan the QR code to access an online registration form. Contact: Arlene Decina (arlene@BurkePresChurch.org).



Spotlight on Godly Play

For 20-plus years, BPC has offered a responsive wondering program called Godly Play to guide children in their faith journey.

- Godly Play is a creative, imaginative approach to Christian formation and spiritual guidance.
- Godly Play has a Montessori foundation with 40+ years of research and practice.
- Godly Play values process, openness, discovery, community, and relationships.
- Godly Play offers and models the worship life, stories, symbols, and rituals of Christian congregations.
- Godly Play allows practitioners (mentors and children) to make relevant and personal theological meaning.
- Godly Play nurtures participants to larger dimensions of belief and faith through wonder and play.

The quality and longevity of the program directly corresponds to the dedication of volunteers willing to attend program-specific training. At BPC we have an amazing group of Godly Play leaders who facilitate the program every Sunday from September-June.



Beautiful, high-quality materials become the unspoken message of respect, care and love of the Godly Play room



Children, youth and adults are all welcome to attend a Godly Play session on Sunday morning. Come see what it is all about and thank one of our volunteers! Godly Play is taking a summer break from June 16- Sept. 8.



Godly Play Team-pictured from left, Lynn Miller, Jean Buffardi, Allison Parsons, Laurie Roberts, Beth Ann Clare, & Arlene Decina (not pictured, Susan Kipp and Eva Thorp)

BPC Preschool

Preschool Enrollment

BPC Preschool is enrolling for the 2024-25 school year. The BPC Preschool has been serving our community for over 40 years.

Our preschool provides a loving and caring atmosphere in which each child is encouraged to develop as a unique person with a positive self-image. We nurture all aspects of a child's growth, including social, emotional, physical, intellectual, and spiritual development.

To learn more and/or enroll please scan the QR code.



The Great Zucchini!

Join us on Tuesday, June 18, at 1:30pm for the Great Zucchini!

The Great Zucchini, Washington's funniest and most magical preschool and kindergarten entertainer, performs a colorful magic show where every child is a star and guaranteed to laugh!

All are invited to attend. Free admission, in the Meeting House.

Preschool Staff

THANK YOU to our amazing Preschool staff!

Our teachers make every effort to provide a secure setting for preschoolers in their care. We recruit teachers with a heart for early education, a love for young children, and a passion for ensuring school readiness.



Preschool Staff

Budget & Finance

Financial data as of May 31, 2024

		2024 Budget	YTD Actuals	Annual % of Budget
<u>Income:</u>		\$1,280,000.00	\$541,144.71	42%
	Pledges	\$1,100,000.00	\$461,217.39	42%
	Loose Offerings	\$20,000.00	\$6,975.91	35%
	Building Use	\$5,000.00	\$3,400.00	68%
	Interest/Dividends	\$8,000.00	\$7,509.98	94%
	Per Capita	\$6,000.00	\$2,705.37	45%
	Online Processing Fees	\$4,000.00	\$2,252.71	56%
	2023 Surplus	\$137,000.00	\$57,083.35	42%
<u>Expenditures:</u>		\$1,280,596.04	\$493,173.10	39%
Personnel Ministry	Personnel	\$503,047.47	\$194,222.76	39%
	Benefits	\$151,897.53	\$51,491.11	34%
Worship Ministry		\$16,075.00	\$3,909.19	24%
Children's Ministry	Children's Education	\$5,000.00	\$2,562.33	51%
	General Administration	\$3,908.00	\$232.40	6%
Spiritual Growth Ministry	Adult Education	\$3,201.00	\$811.05	25%
	Library	\$26.00	\$0.00	0%
	Youth Education	\$27,032.00	\$7,867.57	29%
Congregational Care Ministry	Community Life	\$2,676.00	\$1,684.91	63%
	Small Groups	\$350.00	\$0.00	0%
Vocations Ministry		\$48.00	\$143.99	300%
Outreach Ministry (Mission)		\$107,594.60	\$39,338.51	36%
Communications Ministry		\$1,839.00	\$573.71	31%
Facilities Ministry	Utilities	\$48,800.00	\$17,686.38	36%
	Maintenance	\$129,400.00	\$52,701.52	41%
	Office	\$74,893.00	\$31,258.62	42%
	Transfer to Major Maintenance	\$75,000.00	\$31,250.00	42%
Stewardship	Presbytery Per Capita	\$29,087.44	\$12,116.95	42%
	Insurance	\$29,459.00	\$10,973.00	37%
	Stewardship	\$13,545.00	\$5,364.51	40%
	Mortgage Payments	\$57,054.00	\$28,218.83	49%
Session		\$451.00	\$431.99	96%
Board of Deacons		\$212.00	\$333.77	157%
Difference:		(\$596.04)	\$47,971.61	

Rainbow End of Year



6th graders leading "Sanctuary"
at Rainbow end of year celebration



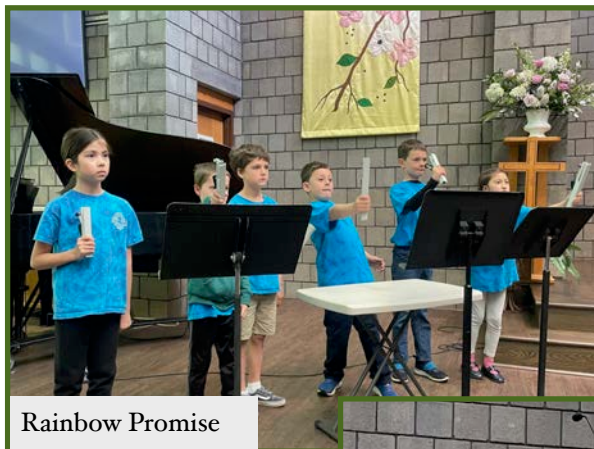
Rainbow end of year celebration



Rainbow end of year dinner with families



Rainbow smiles!



Rainbow Promise



Rainbow Creative Arts



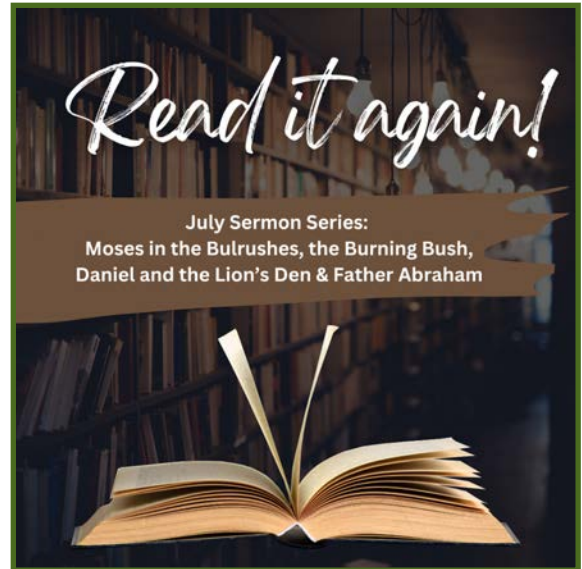
Rainbow Promise

Coming up

Sermon Series

June - *The Gospel According to Pixar*

July - *Read It Again*



GUEST SPEAKER

BURKE
PRESBYTERIAN
CHURCH

WORSHIP AT 10
LUNCH AT 11:30

THE FIRST IN OUR SUMMER
SACRED LISTENING SERIES

REV. DR. FAHED ABU-AKEL

Rev. Dr. Fahed Abu-Akel will preach and lead a special lunch conversation at Burke Presbyterian.

JOIN US FOR SACRED LISTENING

- Rev. Abu-Akel was born in Galilee as a Palestinian Christian.
- He was moderator of the PC(USA) in 2002-2003.
- Learn about Arab Christians, a narrative that is not often told.
- Learn about the PC(USA) presence in the Middle East, his thoughts on history and the current crisis in Israel and Gaza.
- He welcomes all questions so bring your curiosity.



WORSHIP AND LUNCH DISCUSSION

JUNE 30, 2024

LUNCH WILL BE PROVIDED.

\$10 OFFERING TO OFFSET LUNCH COSTS WOULD BE APPRECIATED.

JOIN US! ALL ARE WELCOMED

www.burkepreschurchurch.org

BPC Snapshots



Bill Campbell and Pastor Becca



Confirmation 2024



Confirmation Potluck and Jim!



Confirmation Potluck



The Lord's Prayer



Frozen Tee Youth Connections

BPC Snapshots



GENOut and IMPACT



Godly Play



Wei-Han Wu and Zach Sheets offer concert



Popsicle Party!



The Sandwich Club-HS Sunday School



Daybreak Choir



Community Meals

BPC Snapshots



Julianne captured our little skink visitor for a safe release!



Thank you Fun Team for a staff appreciation lunch!



Youth Connections Dinner



Baptism of Avery Sheely



Girl Scout troop meeting at BPC



Bridges to Worship



Rainbow Choir practice



Rainbow friends

BPC Staff

Senior Pastor and Head of Staff

Rev. Becca Messman
(becca@burkepreschurch.org)

Parish Associate

Rev. Catherine Taylor
(catherine@burkepreschurch.org)

Director of Spiritual Growth

Arlene Decina
(arlene@burkepreschurch.org)

Director of Music Ministries

Julianne Erbrecht
(julianne@burkepreschurch.org)

Director of Finance and Business Administration

Holly Walsh
(holly@burkepreschurch.org)

Interim Youth Director

Kyle Putnam
(kyle@burkepreschurch.org)

Preschool Director

Anndra Rowland
anndra@burkepreschuchr.org

Office and Communications Manager

Nicole Sheely
(nicole@burkepreschurch.org)

Pianist

Wei-Han Wu
(foreignkoffee@gmail.com)

BPC Leadership

BPC is governed by a 15-member elected Session ("elders") charged with the spiritual leadership of the congregation, policy-setting and long-term planning.

The board of deacons provides pastoral care to congregants in need.

Contact Us

5690 Oak Leather Drive
Burke, VA 22015
704-764-0456
office@BurkePresChurch.org
www.BurkePresChurch.org

Sign Up for Information

The New Leaf, a newsletter of BPC members and friends, is published periodically. For regular updates on the life and ministry of Burke Presbyterian Church, refer to our weekly emails and the "In Community" announcements in Sunday worship bulletins. To sign up for our emails, visit our website, contact the church office, or fill out the form in the friendship pads.

